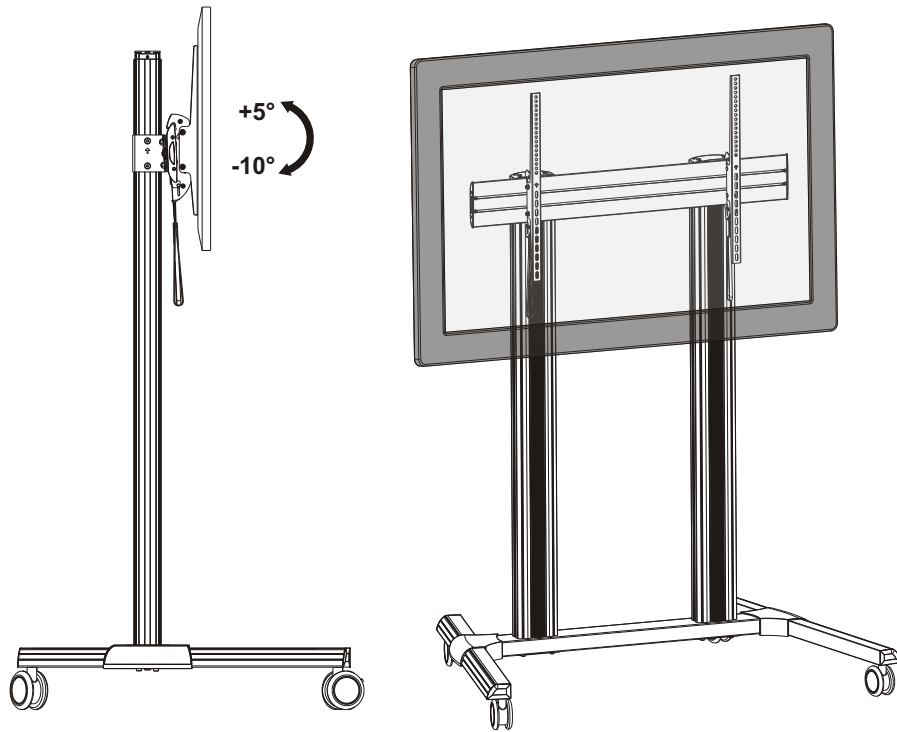


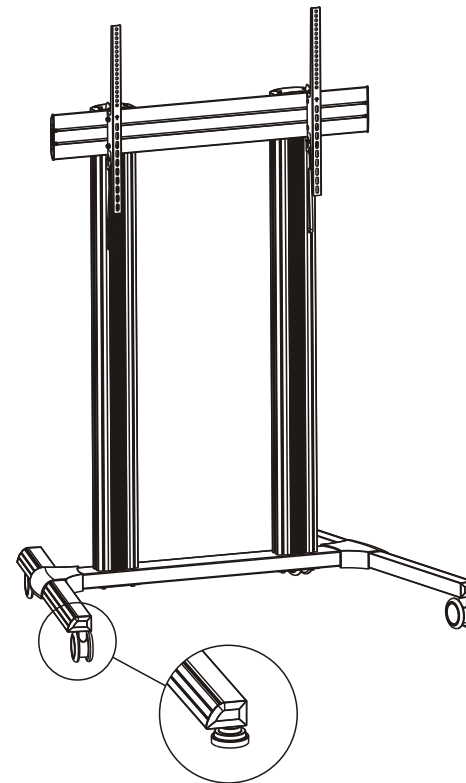
15. Adjustment



Maintenance

- Check that the bracket is secure and safe to use at regular intervals(at least every three months).
- Please contact your distributor if you have any questions.

Flat Panel Mobile Cart/Floor Stand and Accessories



Optional Accessories

Note: The accessories are not standard. The accessories will be selected according to user requirement.

CAUTION: DO NOT EXCEED RATED LISTED WEIGHT. SERIOUS INJURY OR PROPERTY DAMAGE MAY OCCUR!

AS02610TW	 200x200/300x300 400x200/400x400 600x400/800x400 800x600/1000x600	 100" MAX	 100kg (220lbs) RATED	 10kg (22lbs) RATED	All accessories
AS02610TF	 200x200/300x300 400x200/400x400 600x400/800x400 800x600/1000x600	 100" MAX			

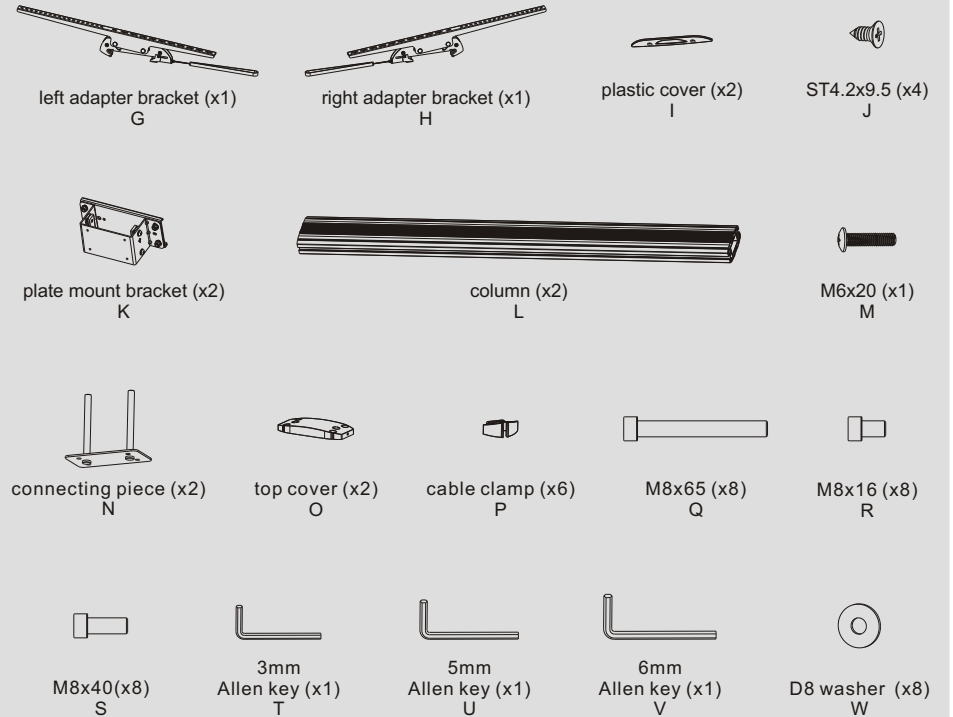
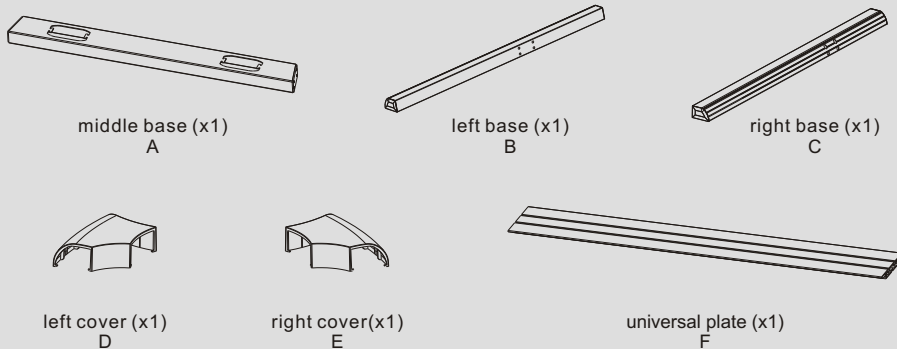
NOTE: Read the entire instruction manual before you start installation and assembly.

WARNING

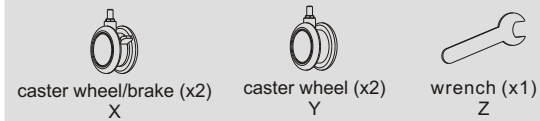
- Do not begin the installation until you have read and understood all the instructions and warnings contained in this installation sheet. If you have any questions regarding any of the instructions or warnings, please contact your local distributor.
- This mounting bracket was designed to be installed and utilised ONLY as specified in this manual. Improper installation of this product may cause damage or serious injury.
- Always use an assistant or mechanical lifting equipment to safely lift and position the equipment.
- Tighten screws firmly, but do not over tighten. Over tightening can cause damage to the items, This greatly reduces their holding power.
- This product is intended for indoor use only. Using this product outdoors could lead to product failure and personal injury.

IMPORTANT: Ensure that you have received all parts according to the component checklist prior to installation. If any parts are missing or faulty, telephone your local distributor for a replacement.

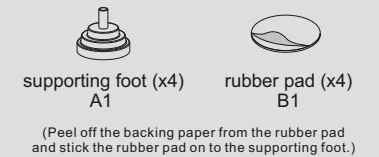
AS02610TW/TF



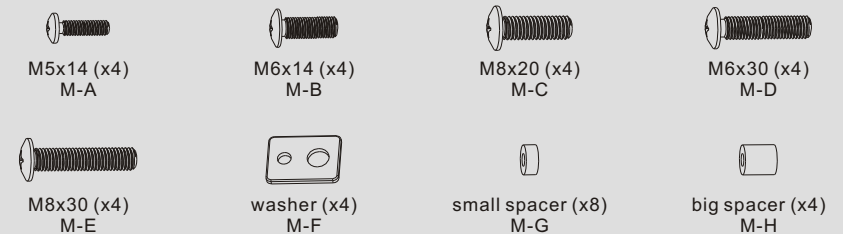
Component (AS02610TW only)



Component (AS02610TF only)

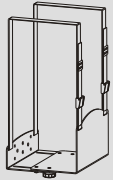


Package M



The following accessories are optional.

AS02H



host machine rack (x1)
T-A



connecting piece (x1)
T-B

Package P



M6x8 (x4)
P-A

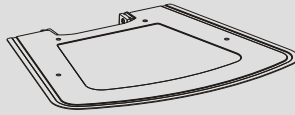


4mm Allen key (x1)
P-B



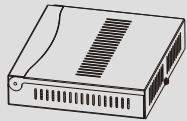
silicone pad (x8)
P-C

AS02



iron shelf (x1)
T-C

AS03V/AS02P



laptop box (x1)
T-D

AS03V only



connecting piece (x1)
T-E

Package P



M6x8 (x4)
P-D



D6 washer (x4)
P-E

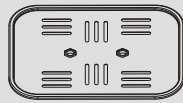


key (x1)
P-F

AS02R

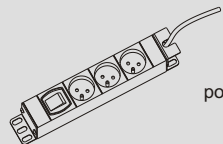


support rod (x2)
T-F



camera shelf (x1)
T-G

AS01K

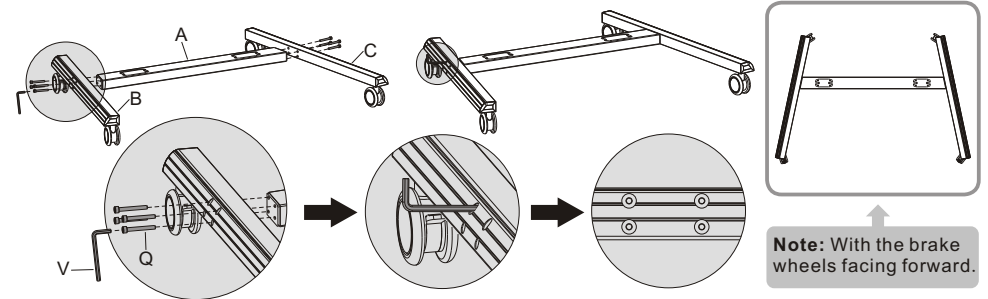


power socket (x1)
T-H



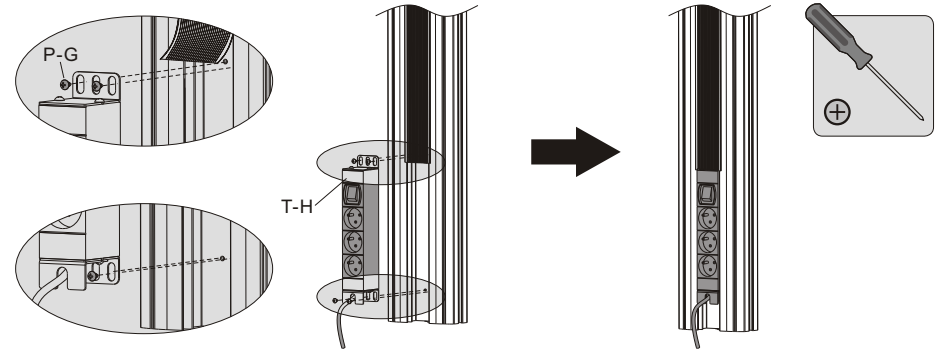
ST4.8x9.5 (x4)
P-G

1. Assembling the Base



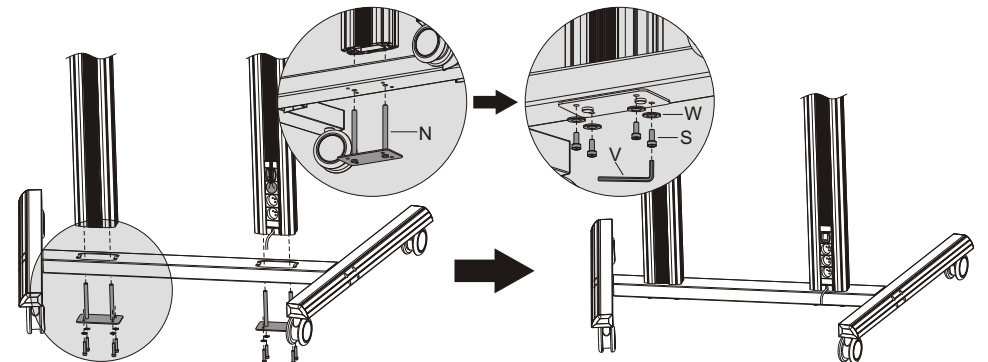
Attach the left and right base to the middle base using the appropriate screws. Tighten all screws with an Allen key.

2. For the model AS01K installation (Assembly based on the accessories selected by user.)



Attach the power socket to the back of column using the appropriate screws. Tighten all screws with a phillips screwdriver.

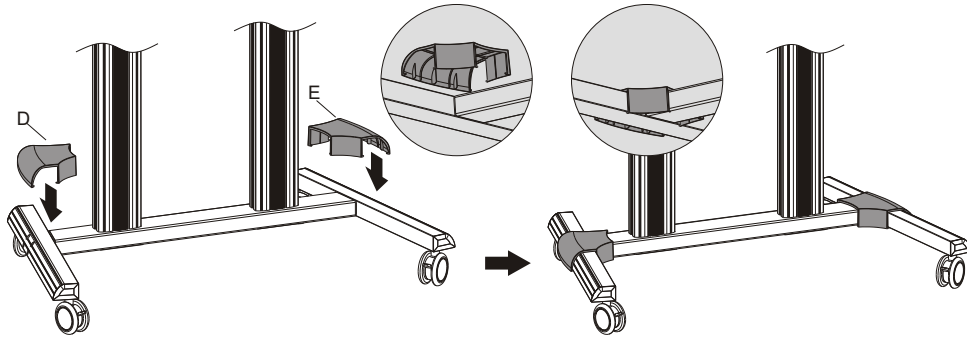
3. Attaching the Columns to the Base



Attach the columns to the assembled base respectively using the connecting pieces, secure them with the appropriate screws.

NOTE: Lock the brakes on the casters to avoid any sudden movements during installation.

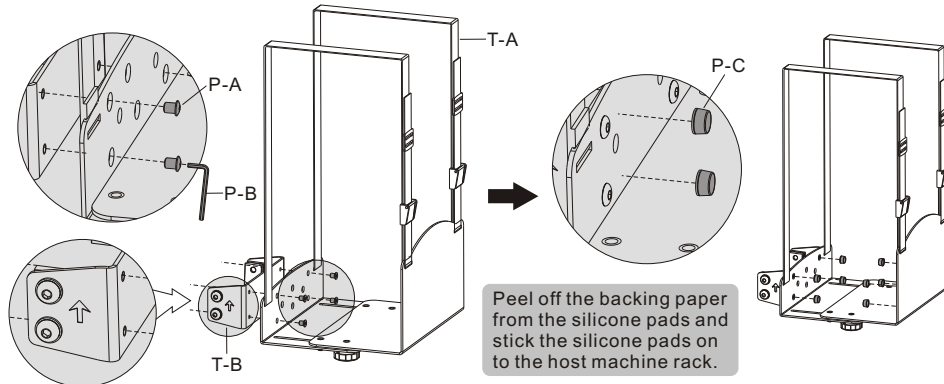
4. Installing the Covers



5. For the model AS02H installation

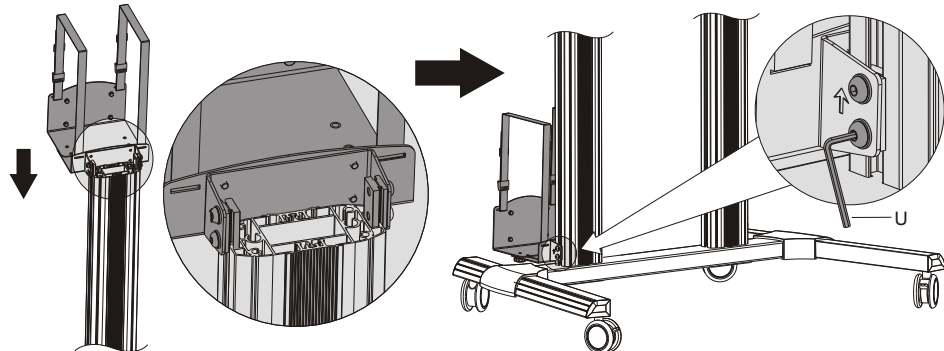
(Assembly based on the accessories selected by user.)

5-1: Installing the host machine rack on the back of the column



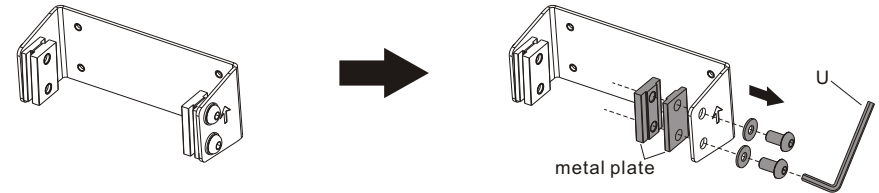
Attach the connecting piece to the host machine rack using the appropriate screws. Tighten all screws with an Allen key.

NOTE: With the arrow pointing upward.

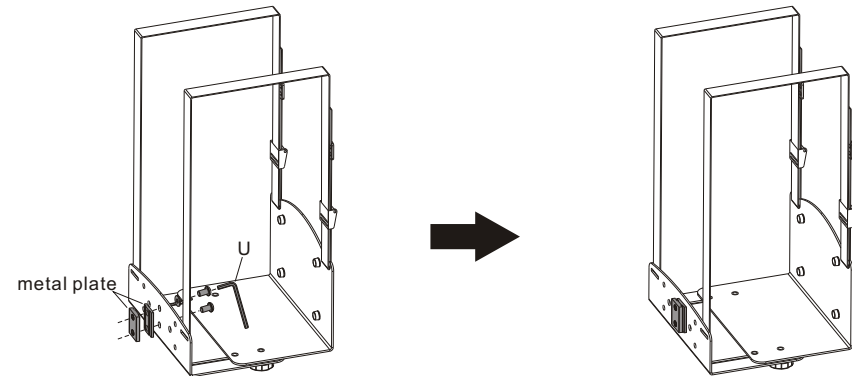


Insert the host machine rack to the desired position along the column rails. Tighten all screws to secure it with an Allen key.

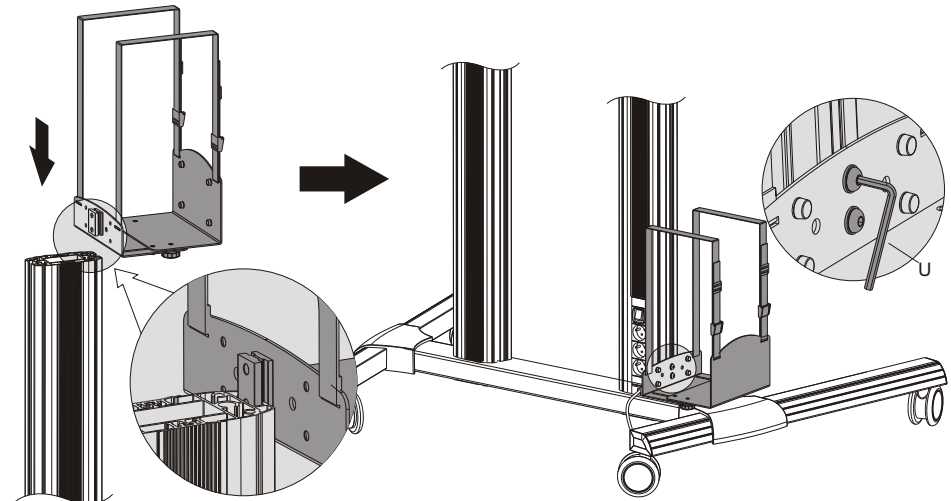
5-2: Installing the host machine rack on the side of the column (If the power socket is installed on the back of the column)



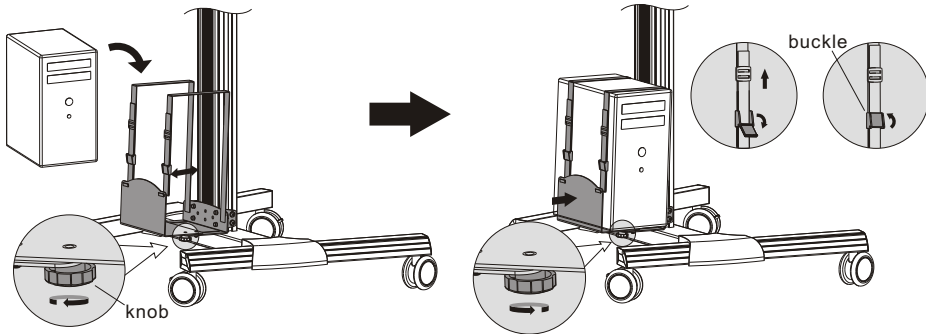
Loosen the screws in order to separate the metal plate from the connecting piece.



Attach the previously removed plate to the host machine rack using the previously removed screws. Tighten all screws with an Allen key.



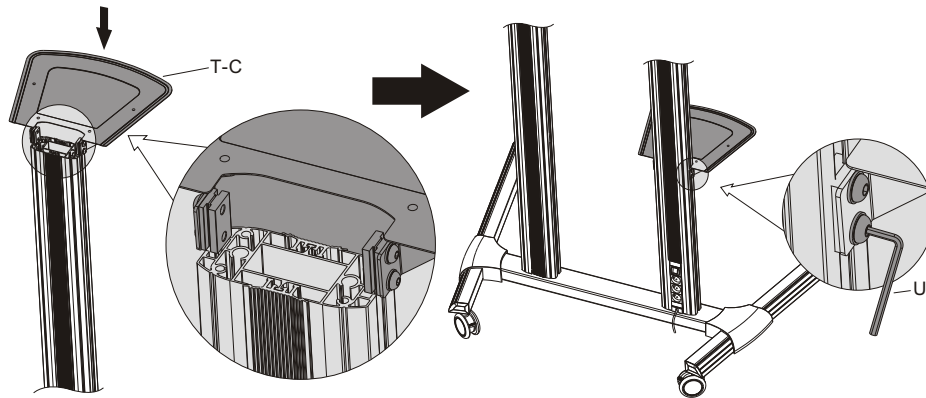
Insert the host machine rack to the desired position along the column rails. Tighten all screws to secure it with an Allen key.



- Loosen the knobs to pull one side of the rack to make it keep the maximum space.
- Put the host machine in the rack and push gently on one side of the rack to keep it close to the host machine, then tighten the knobs to secure.
- Use the adjustable buckles to hold the machine firmly in place.

6. For the model AS02 installation

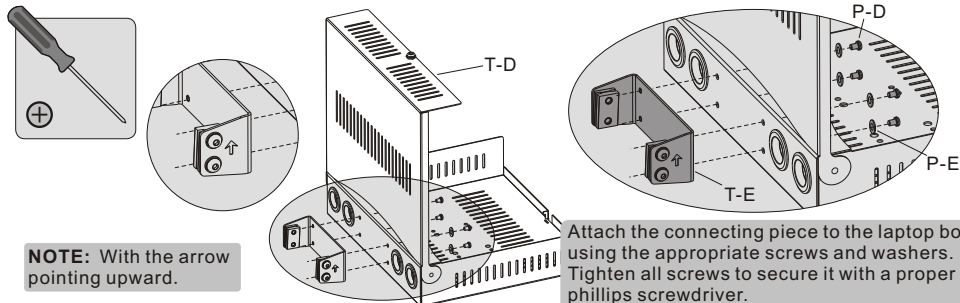
(Assembly based on the accessories selected by user.)



Insert the iron shelf to the desired position along the column rails. Secure it by tightening screws with an Allen key.

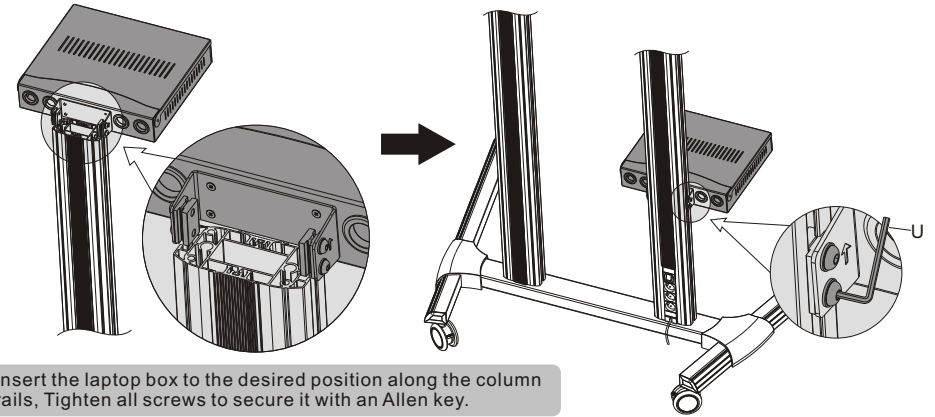
7. For the model AS03V installation

(Assembly based on the accessories selected by user.)



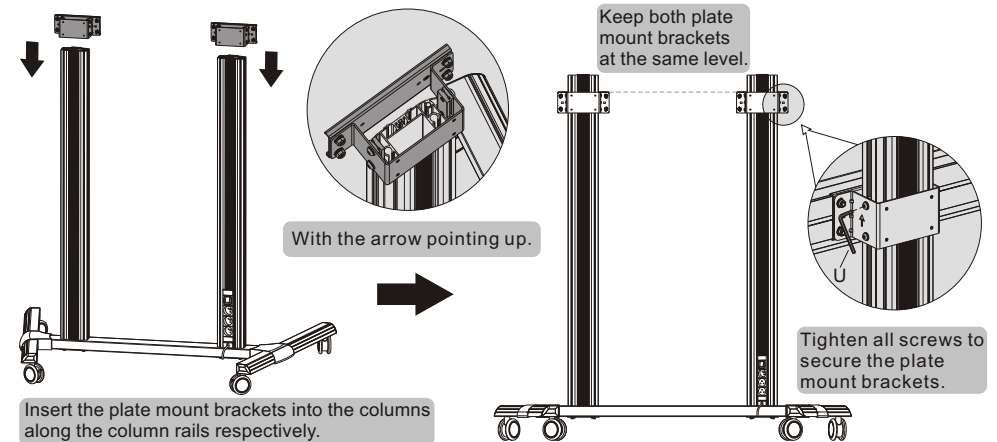
NOTE: With the arrow pointing upward.

Attach the connecting piece to the laptop box using the appropriate screws and washers. Tighten all screws to secure it with a proper phillips screwdriver.



Insert the laptop box to the desired position along the column rails, Tighten all screws to secure it with an Allen key.

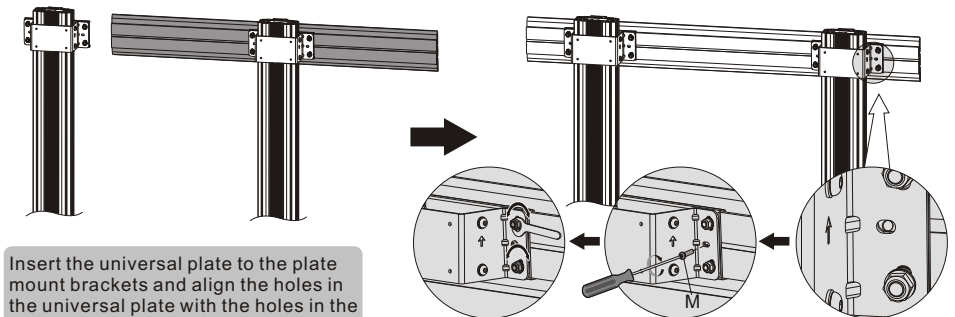
8. Installing the Plate Mount Brackets



Insert the plate mount brackets into the columns along the column rails respectively.

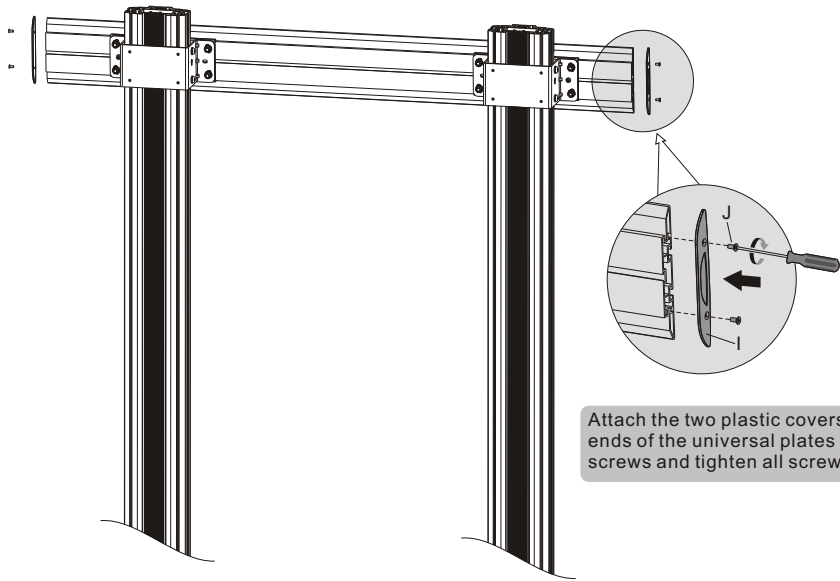
Tighten all screws to secure the plate mount brackets.

9. Installing the Universal Plate



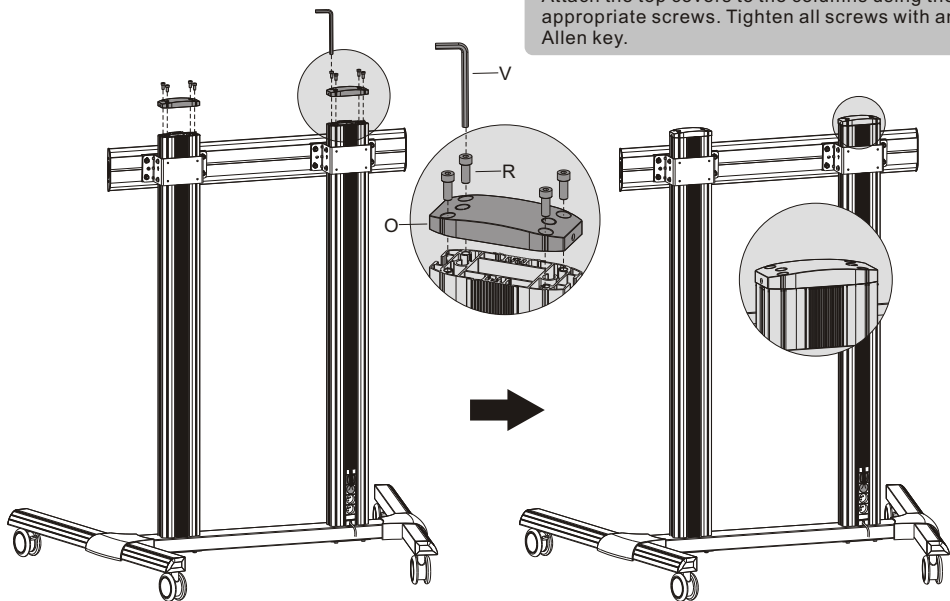
Insert the universal plate to the plate mount brackets and align the holes in the universal plate with the holes in the plate mount brackets.

- Install the screw into either of two holes.
- Tighten all screws but do not over tighten!



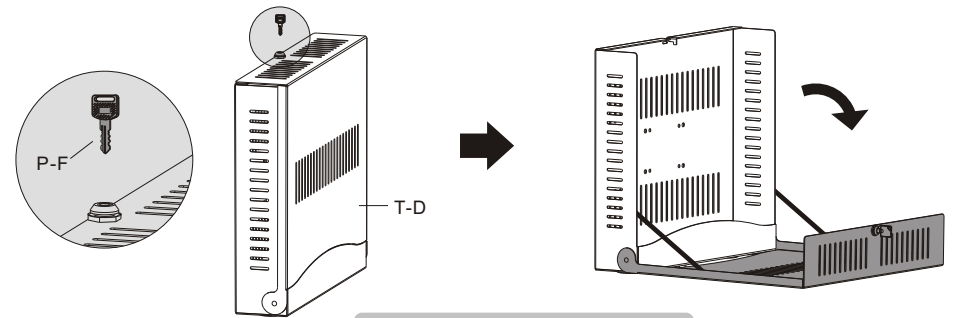
Attach the two plastic covers to both ends of the universal plates using the screws and tighten all screws to secure.

10. Installing the Top Covers

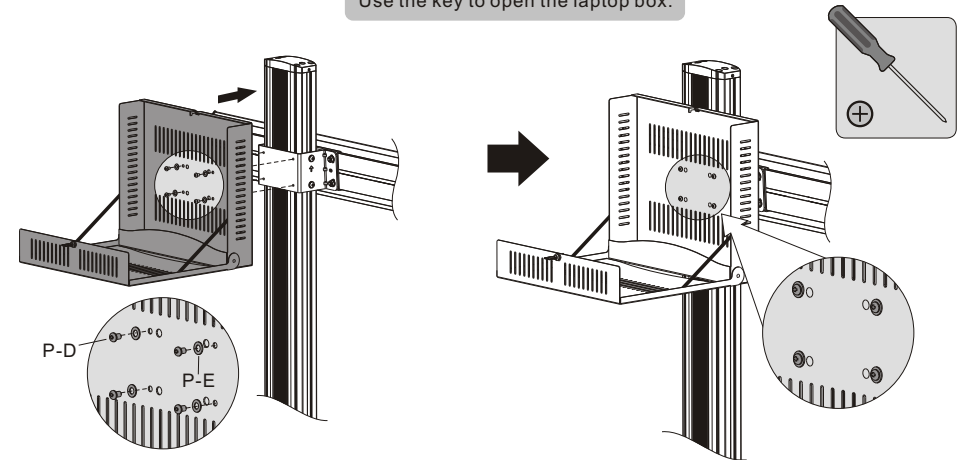


Attach the top covers to the columns using the appropriate screws. Tighten all screws with an Allen key.

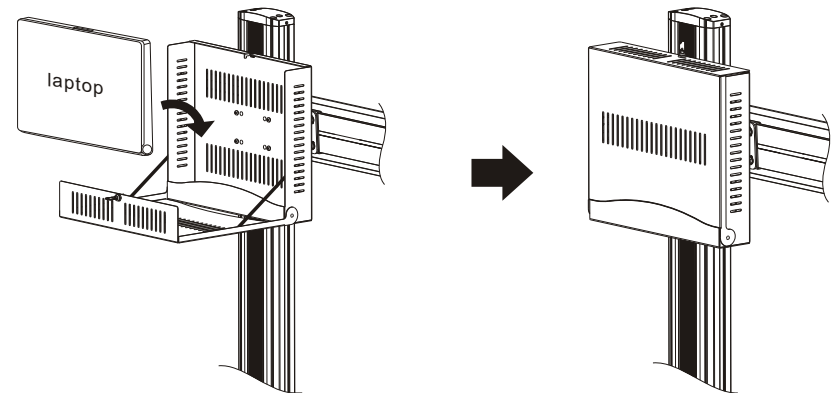
11. For the model AS02P installation (Assembly based on the accessories selected by user.)



Use the key to open the laptop box.

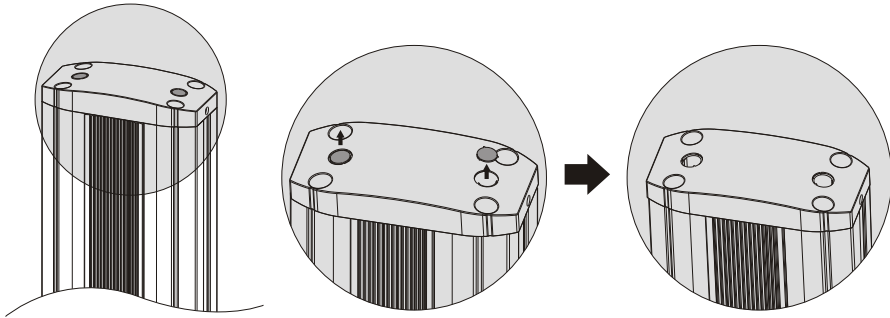


Attach the laptop box to the plate mount bracket using the appropriate screws. Tighten all screws with a proper phillips screwdriver.

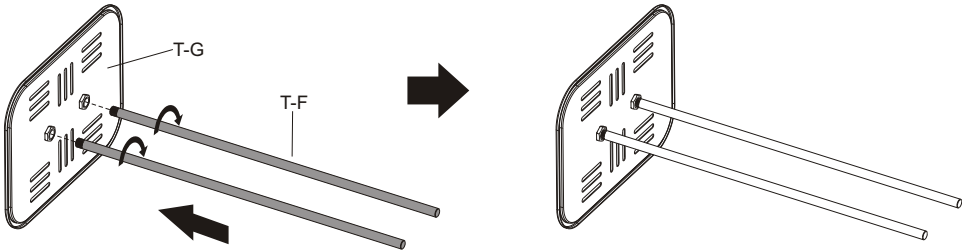


Put the laptop into the box gently, then close the box and lock it.

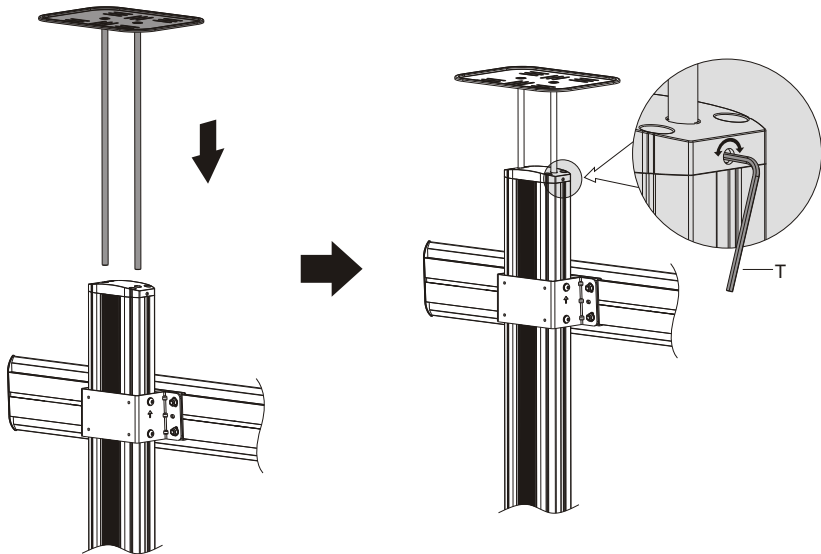
12. For the model AS02R installation
(Assembly based on the accessories selected by user.)



Remove two plastic caps for the camera shelf installation.

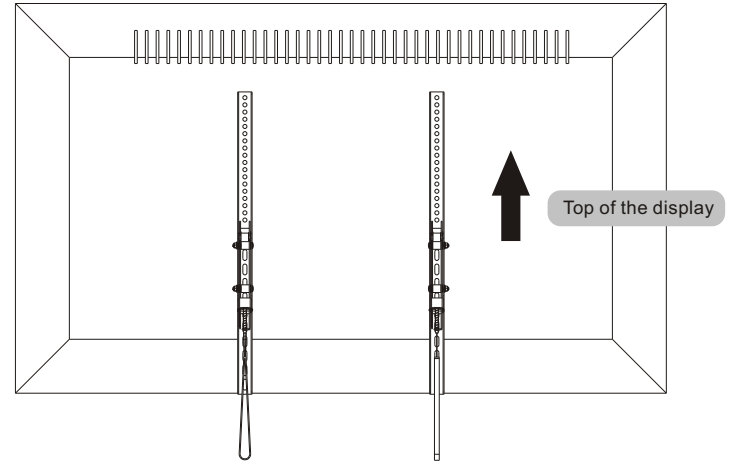


Tighten the support rods to the camera shelf.

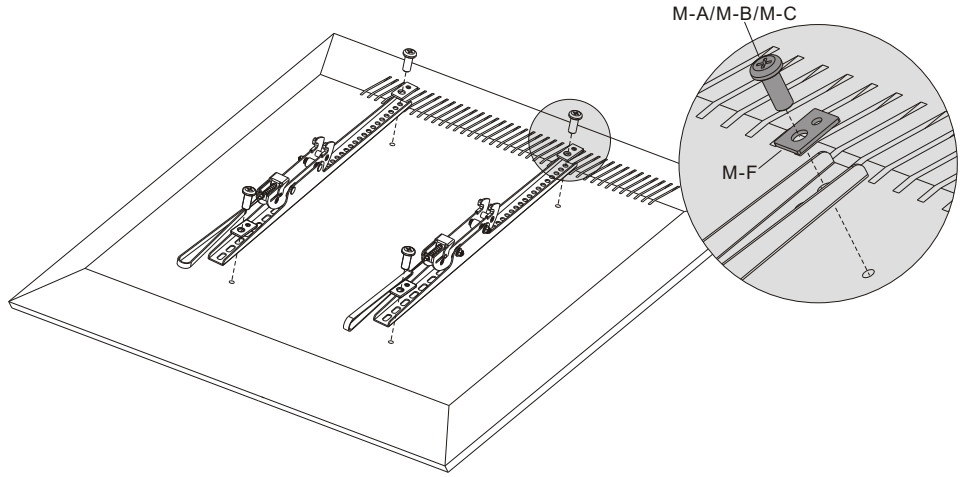


Insert the support rods to the desired position (Determine the position for support mount keeping in mind display size.) along the column slots and tighten both screws to secure the support mount.

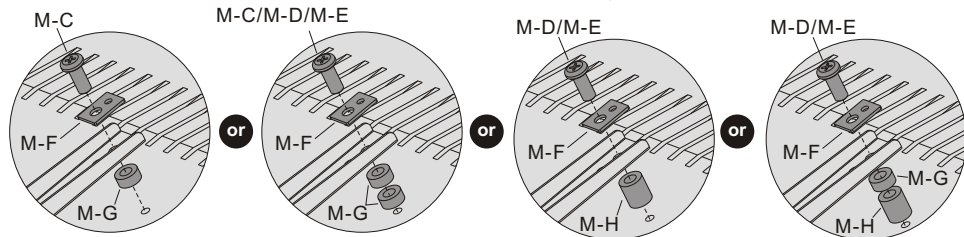
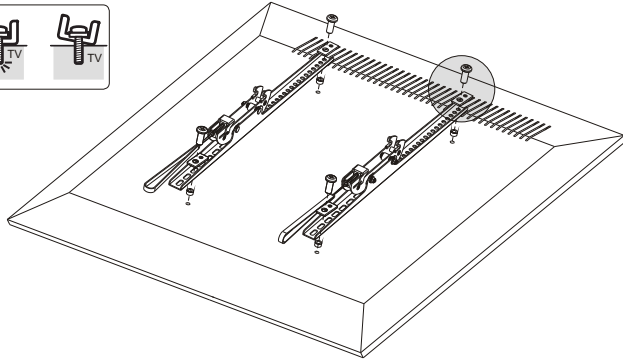
13. Installing the Adapter Brackets



13-1 For Flat Back Screens



13-2 For Recessed Back Screens or to Access A/V Inputs

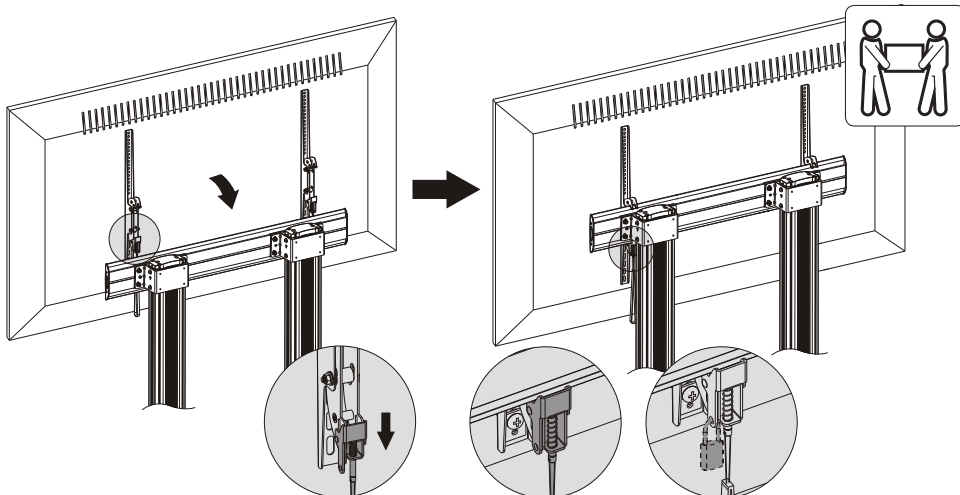


Note: Choose the appropriate screws, washers and spacers (if necessary) according to the type of screen.

- Position the adapter brackets as close as possible to the center of the display.
- Screw the adapter brackets onto the display.

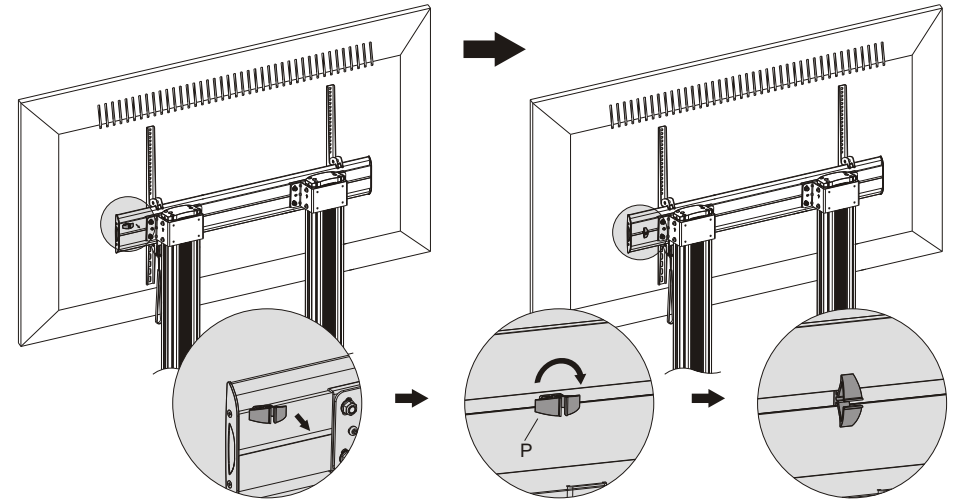
⚠ Tighten all screws but do not over tighten.

14. Hanging the Display onto the Universal Plate

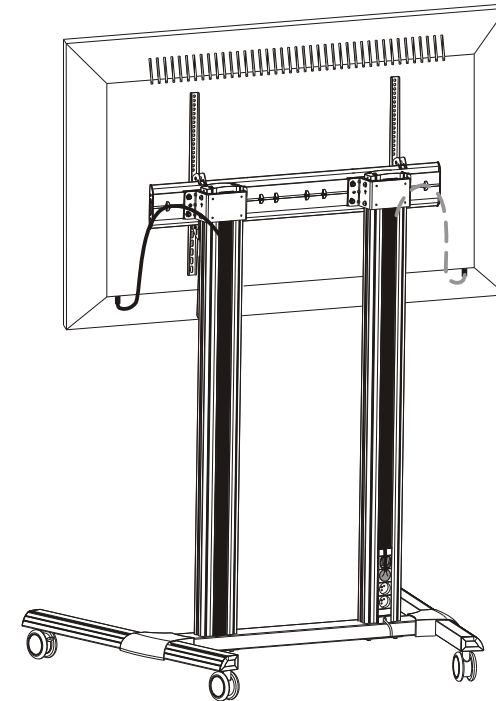


- Lift the display carefully and pull downward two straps at the same time, then hook the adapter brackets to the universal plate. Fasten the adapter brackets to the universal plate by releasing the straps.
- Use the padlock to prevent the display from being stolen (The padlock is not included).

15. Cable Management



Insert the cable clamps horizontally into the plate slots, then turn the cable clamps to the vertical to secure them.



Run the cables through the cable clamps and the rubber strip.